

PART OF S.E. 1/4 OF SEC. 20, T.7N., R.1W., S.L.B.&M.
W. S. BUTLER SUBDIVISION NO. 2

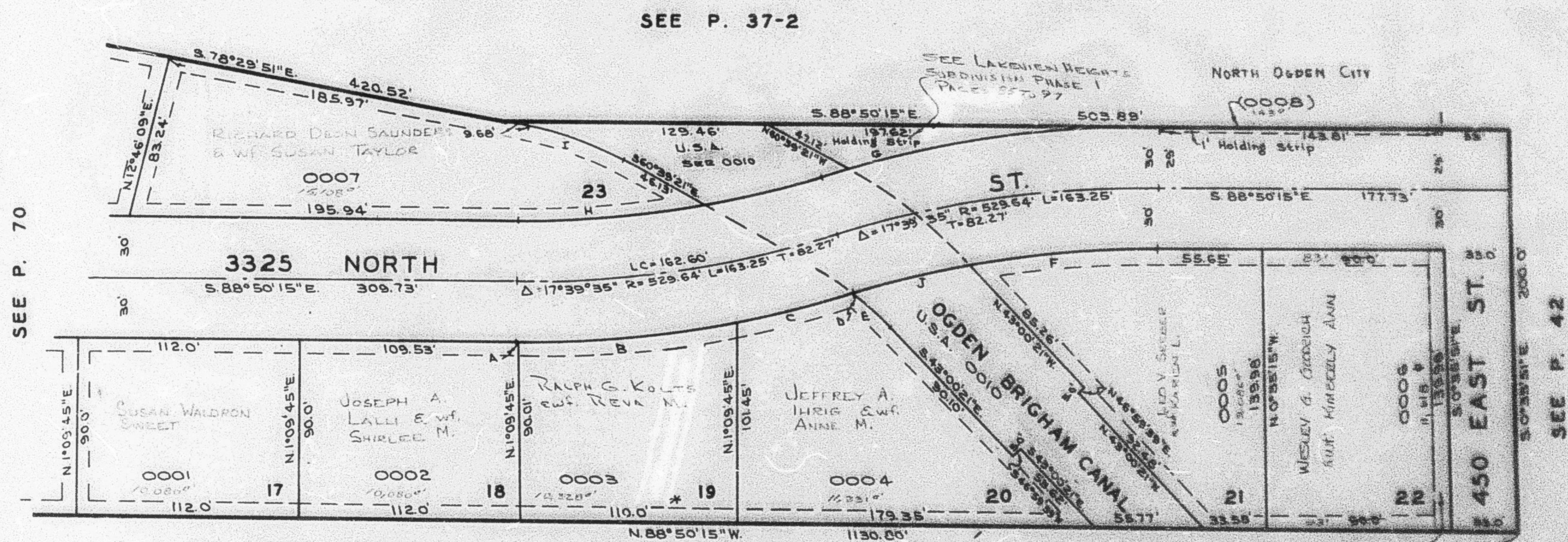
71

LOTS 17 TO 23
 IN NORTH OGDEN CITY

TAXING UNIT: 10

SCALE 1" = 50'

PREFIX: 16-071



SEE BOOK 17, P. 41

SEE BOOK 17, P. 38-1

CURVE DATA										
A	B	C	D	E	F	G	H	I	J	
Δ = 0°15'11"	11°20'28"	6°00'53"	0°02'57"	8°22'55"	10°50'38"	16°11'52"	10°52'00"	17°50'30"	6°48'57"	
R = 559.64'	559.64'	559.64'	559.64'	170.00'	499.64'	559.64'	499.64'	170.00'	499.64'	
L = 2.47'	110.77'	58.75'	0.48'	24.87'	94.55'	158.20'	94.76'	52.94'	59.43'	
LC = 2.47'	110.59'	58.72'	0.48'	24.85'	94.41'	157.67'	94.62'	52.72'	59.35'	

* NOTE: SEE ORDINANCE
 VACATING EASEMENT
 BOOK 1425 PAGE 86

NOTE: UTILITY & DRAINAGE EASEMENTS
 EACH SIDE OF PROPERTY LINES AS
 INDICATED BY DASHED LINES.
 SEE ORIGINAL PLAT IN BOOK 19,
 P. 79.

(NORTH OGDEN CITY)
 074 * 0011